



Contents	Page
Introduction	46
AZ 1010 Series - Timing Belt Drive	47
AZ 1040 Series - Timing Belt Drive	47
AZ 2000 Series - Timing Belt Drive	48
AZ 2001 Series - Timing Belt Drive	48
AZ 2004 Series - Timing Belt Drive	49
AZ 2005 Series - Timing Belt Drive	49

Z-Series Timing Belt Drives

Uhing Timing Belt Drives consist of an aluminium profile which is rigid and resistant to torsion.

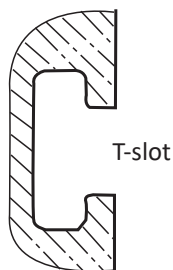
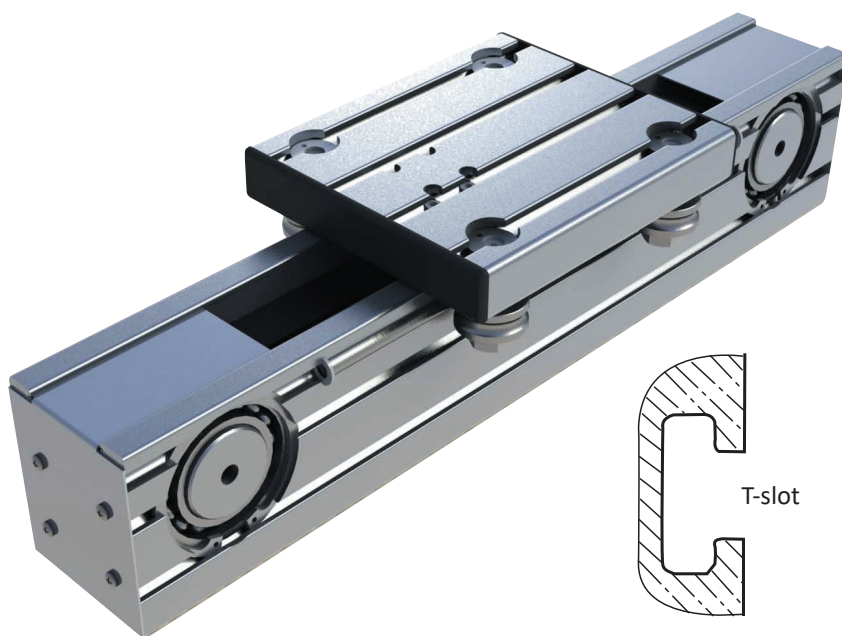
Several through going T-slots integrated into the profile allow variable application and facilitate fitting.

Power is transmitted by the belt which is connected to the load carrier.

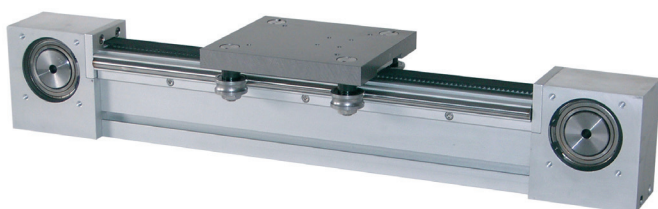
Operating Temperature: -10°C to +80°C.

Optional Features:

- Motor
- Proximity switch
- Enhanced protection against corrosion
- Covers
- Carrier with non-standard fixing points.

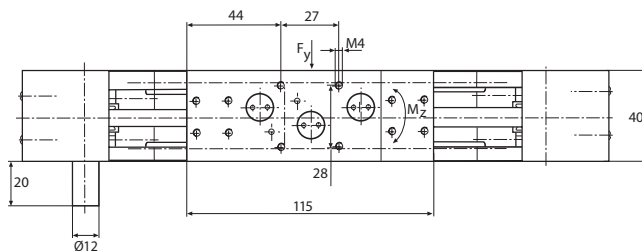
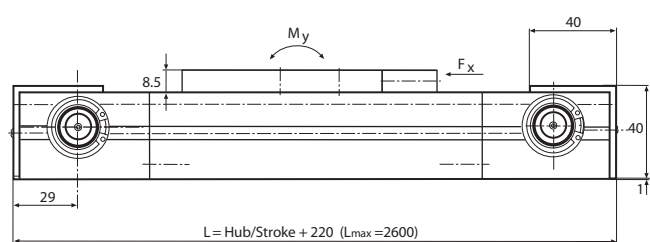


Optional Proximity Switch



Optional Motor

AZ 1010 - Timing Belt Drive with Roller Mounted Load Carrier



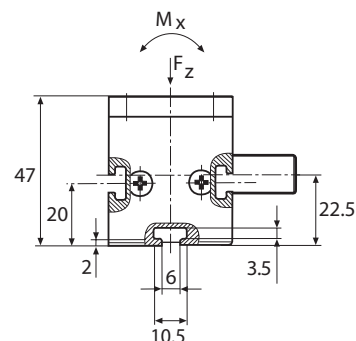
Track

Round guide bars, protected against corrosion and hardened, mounted in Al-profile.

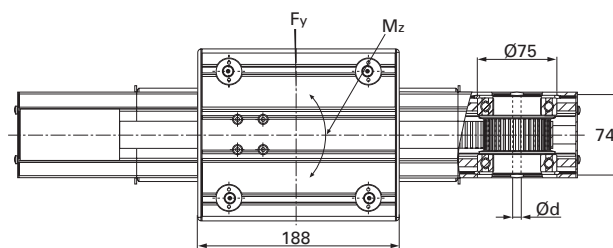
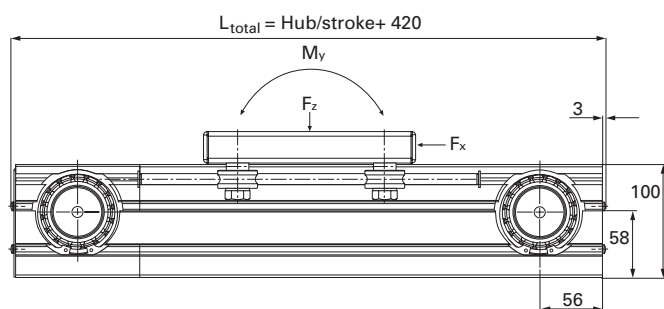
Load/Moments

F_x	F_y	F_z	M_x	M_y	M_z
300 N	120 N	146 N	1.8 Nm	2.3 Nm	4.7 Nm

All specifications are based on a running distance of 10,000 km



AZ 1040 - Timing Belt Drive with Roller Mounted Load Carrier



$d_{min} \dots \dots \dots = 10^{H7}$
 $d_{max} \text{ with feather key groove} = 28^{H7}$
 $d_{max} \text{ plain bore} = 30^{H7}$

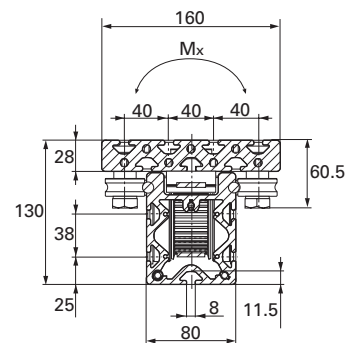
Track

Round guide bars, protected against corrosion and hardened, mounted in Al-profile.

Load/Moments

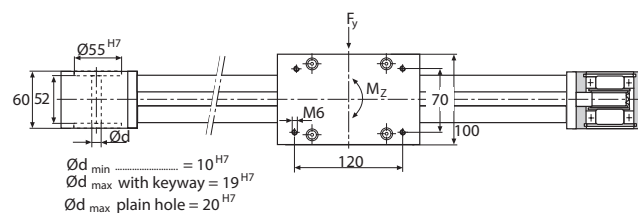
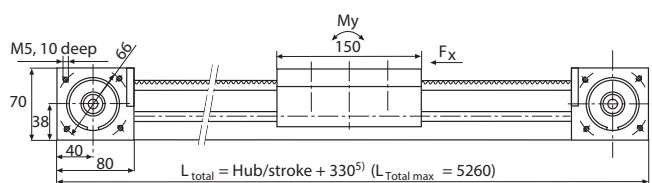
F_x	F_y	F_z	M_x	M_y	M_z
1700 N	2000 N	1200 N	54 Nm	84 Nm	146 Nm

All specifications are based on a running distance of 10,000 km



Full technical details available on request

AZ 2000 - Timing Belt Drive with Bearing Style Load Carrier



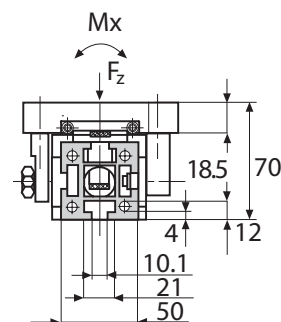
Track

Slide rails in conjunction with Al-profile, adjustable to give zero play.

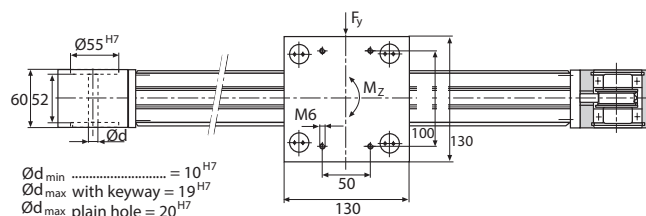
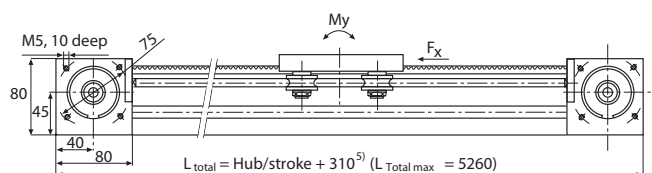
Load/Moments

F_x	F_y	F_z	M_x	M_y	M_z
560 N	170 N	90 N	7 Nm	5 Nm	10 Nm

All specifications are based on a running distance of 10,000 km



AZ 2001 - Timing Belt Drive with Roller Mounted Load Carrier



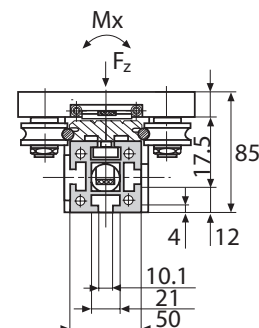
Track

Round guide bars, protected against corrosion and hardened, mounted in Al-profile.

Load/Moments

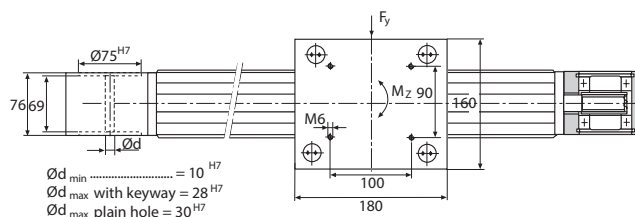
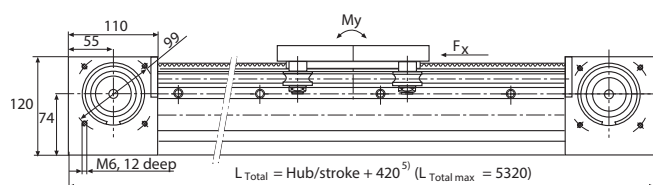
F_x	F_y	F_z	M_x	M_y	M_z
560 N	900 N	1000 N	30 Nm	50 Nm	80 Nm

All specifications are based on a running distance of 10,000 km



Full technical details available on request

AZ 2004 - Timing Belt Drive with Roller Mounted Load Carrier



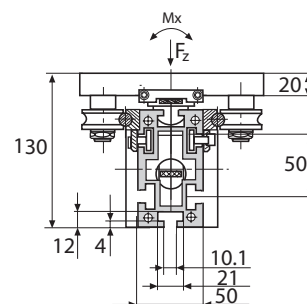
Track

Round guide bars, protected against corrosion and hardened, mounted in Al-profile.

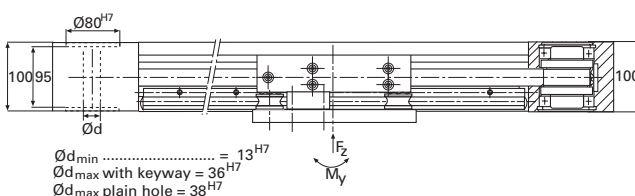
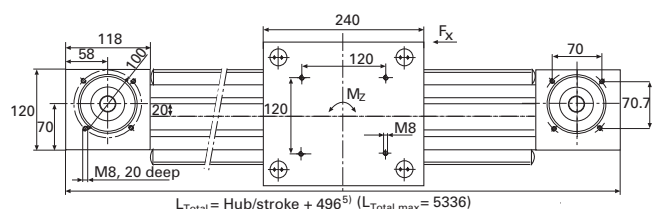
Load/Moments

F_x	F_y	F_z	M_x	M_y	M_z
1700 N	2000 N	1200 N	54 Nm	84 Nm	146 Nm

All specifications are based on a running distance of 10,000 km



AZ 2005 - Timing Belt Drive with Roller Mounted Load Carrier



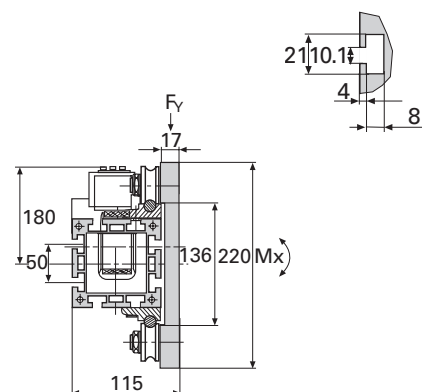
Track

Round guide bars, protected against corrosion and hardened, mounted in Al-profile.

Load/Moments

F_x	F_y	F_z	M_x	M_y	M_z
2490 N	2200 N	1200 N	84 Nm	124 Nm	212 Nm

All specifications are based on a running distance of 10,000 km



Full technical details available on request